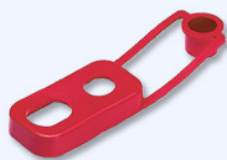


# Battery Terminal Insulators

Continuation of our battery terminal insulators



## 458 Series



- Insulator for dual post battery
- Attached cover can insulate post when not in use
- Often used with 226 Series Cap



Part #	Cable Entry Size
458N0	n/a



## 500 Series



- Protect angle battery terminals
- Left, right, and dual cable entry
- Available in two sizes
- Cable Entry:

Part #	Cable Entry Size
500L7	.5" / 12.7mm
500L9	.69" / 17.5mm
500R7	.5" / 12.7mm
500R9	.69" / 17.5mm
500D7	.5" / 12.7mm
500D9	.69" / 17.5mm



## 553 Series



- Protect side post battery connection
- Available in two sizes

Part #	Cable Entry Size
553X6	.59" / 15.0mm
553X9	.90" / 22.9mm



## 460 Series



- Protect marine battery, Exide 32
- Tabbed finger grip, for easy removal
- Available for positive and negative
- Allows for secondary battery connection

Part #	Cable Entry Size
460N9	n/a



## 462 Series



- Protect dual-post battery terminals
- Often used in marine industry
- Attached cap covers post when not in use

Part #	Cable Entry Size
462N0	n/a

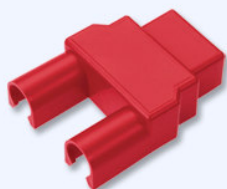


## 466 Series



- Protect heavy duty battery terminal
- Inside Grip Dia: .42" / 10.7mm
- Cable Entry:

Part #	Cable Entry Size
466L1,R1	.13" / 3.3mm
466L2,R2	.30" / 7.6mm
466L3,R3	.50" / 12.7mm
466N9	Oval up to 4/0 ga



## 468 Series



- Protect heavy duty battery terminal
- Accepts Right, Left, and Dual Cable
- Snaps onto terminal & cable
- Accepts up to 4/0 ga cables

Part #	Cable Entry Size
468L9	.82" / 20.8mm
468R9	.82" / 20.8mm
468D9	.82" / 20.8mm