

# L-Post Terminal Insulators

This series of insulators is designed to protect L-Post terminals, or Flag terminals.



## 433 Series



- Protect L-Post battery terminals
- Available with left & right entry
- Cable entry: .44" / 11.2mm
- Post Height: 1.04" / 26.4mm

Part #	Cable Entry Size
433L5	.44" / 11.2mm
433R5	.44" / 11.2mm

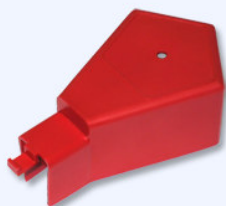


## 436 Series



- Protect flat threaded battery posts
- Also protect low-profile L-Posts
- Insulator snaps onto cable
- Can be secured to cable with ziptie
- Available without shroud
- Post Height: .75" / 19.1mm

Part #	Cable Entry Size
436N4	.36" / 9.2mm
436N5	.48" / 12.2mm
436N7	.64" / 16.2mm
436S4	.35" / 9.0mm
436S5	.48" / 12.2mm



## 437 Series

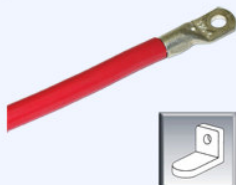


- Protect L-Post battery terminals
- Insulator snaps onto cable
- Can be secured to cable with ziptie
- Available without shroud
- Post Height: 1.28" / 32.5mm

Part #	Cable Entry Size
437N4	.36" / 9.3mm
437N5	.46" / 11.4mm
437N7	.48" / 12.3mm
437S5	.40" / 10.0mm



## 439 Series



- Protect L-Post battery terminals
- Large design to fit various terminals
- Insulator snaps onto cable
- Can be secured to cable with ziptie
- Post Height: 1.28" / 32.5mm

Part #	Cable Entry Size
439N5	.38" / 9.6mm



## 444 Series

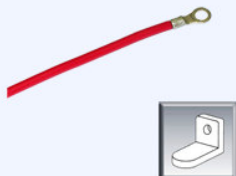


- Protect smaller L-Post terminals
- Available with left or right entry
- Post Height: 1.2" / 30.5mm

Part #	Cable Entry Size
444L6	.30" / 7.6mm
444R6	.30" / 7.6mm
444L8	.37" / 9.4mm
444R8	.37" / 9.4mm
444L9	.44" / 11.2mm
444R9	.44" / 11.2mm



## 799 Series



- Protect L-Post battery terminals
- Left, right & dual cable entry
- Post Height: 1.51" / 38.3mm
- Cable Entry: .25" / 6.4mm

Part #	Cable Entry Size
799L9	.25" / 6.4mm
799R9	.25" / 6.4mm
799D9	.25" / 6.4mm



## 481 Series



- Protect heavy duty L-Post terminals
- Covers exposed terminal base
- Typically used with 433 Series

Part #	Cable Entry Size
481N9	n/a