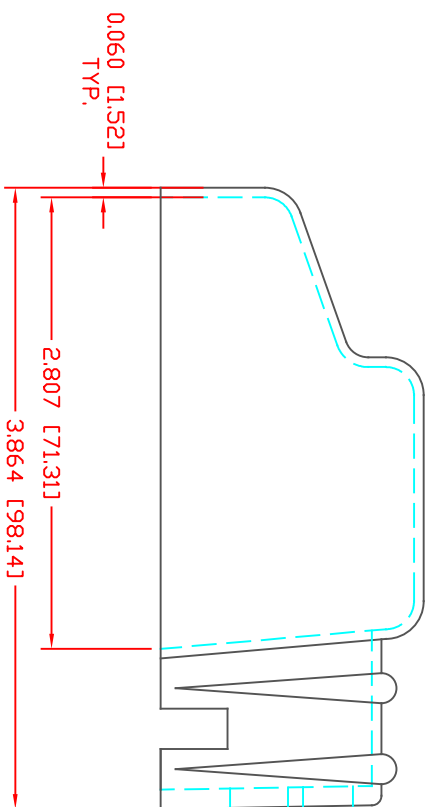
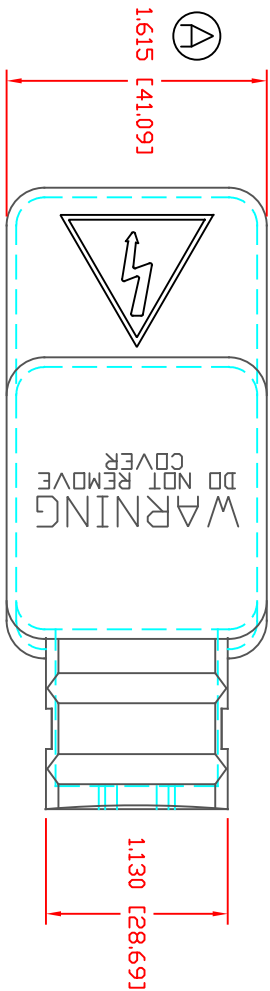
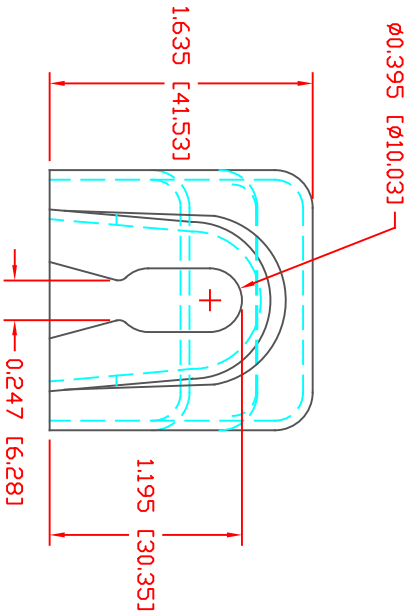


THE INFORMATION CONTAINED IN THIS DRAWING IS THE SOLE PROPERTY OF VTE INCORPORATED. ANY REPRODUCTION IN PART OR WHOLE WITHOUT THE WRITTEN PERMISSION OF VTE INCORPORATED IS PROHIBITED.VTE MAKES NO WARRANTY, EXPRESSED OR IMPLIED, AS TO THE SUITABILITY OF A PRODUCT FOR ANY INTENDED USE. THE CUSTOMER SHALL BEAR THE SOLE RESPONSIBILITY OF DETERMINING THE SUITABILITY OF ANY VTE PRODUCT FOR ITS END USE.

LTR.	REVISIONS	DATE	INT.
Ⓐ	ISS WAS L&E, REVISED TO AGREE WITH PARTS AS MANUFACTURED	15AUG13	BRH



4 GA. (.395" Ø)
N4



SCALE FACTOR : NONE
ALL DIMENSIONS GIVEN AS: In [mm]
TOLERANCES UNLESS OTHERWISE SPECIFIED :
MOLDED PARTS: ±.030" [±0.8mm]
HARDWARE ITEMS: ±.010" [±0.25mm]



VTE Incorporated
5437 Robinson Road, P.O. Box 790
Pellston, Michigan 49769
Telephone: 1-800-527-9256, 231-539-8000
FAX: 231-539-0914

VTE PART NO: 1101950102
MATERIAL: PVC
VENDOR PART NO: 9812-95-RED 683
SHORE DUREMETER: "A" 10 SEC. 95
SPECIFIC GRAVITY: 1.49
ULT. ELONGATION %: 200
MELTING TEMP: 345-365 F [174-185 C]
Tensile Strength PSI: 2100
Dielectric Strength, v./mil: 438
UL Rating: V2

DO NOT SCALE

REF:	DATE:	DRN BY:	BRH	WEIGHT:
CUSTOMER DIMS	24MAR10	CHK'D BY:	BRH	.062 LBS [28.4 g]
TITLE: BATTERY TERMINAL INSULATOR				
MATERIAL:	PVC	PART NO.		
COLOR: RED	DRG CLASS	REV A		
455N4V02				