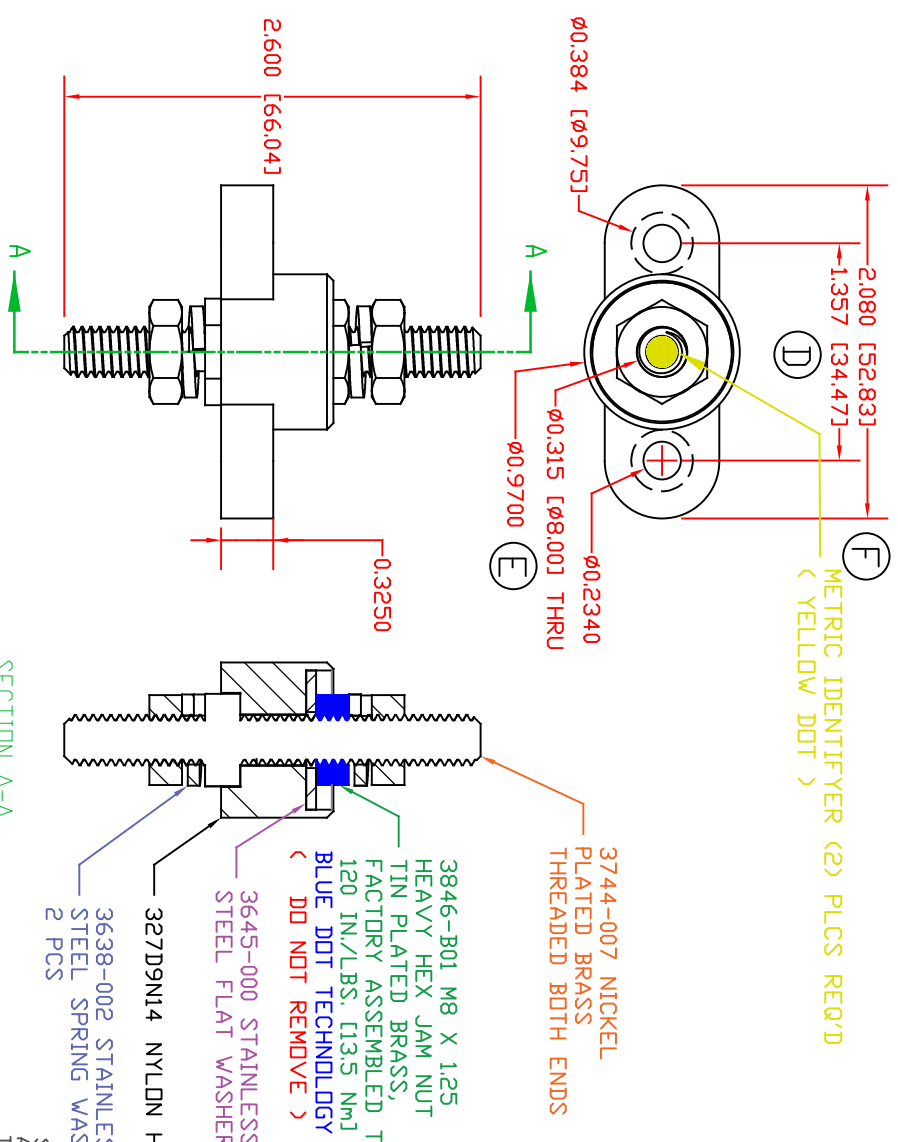
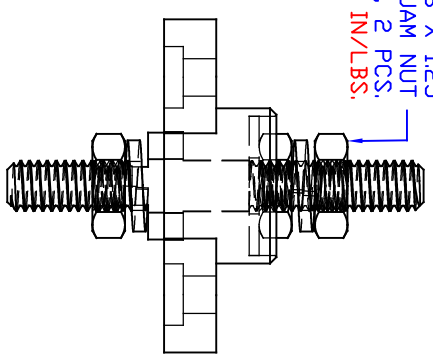


THE INFORMATION CONTAINED IN THIS DRAWING IS THE SOLE PROPERTY OF VTE INCORPORATED. ANY REPRODUCTION IN PART OR WHOLE WITHOUT THE WRITTEN PERMISSION OF VTE INCORPORATED IS PROHIBITED. VTE MAKES NO WARRANTY, EXPRESSED OR IMPLIED, AS TO THE SUITABILITY OF A PRODUCT FOR ANY INTENDED USE. THE CUSTOMER SHALL BEAR THE SOLE RESPONSIBILITY OF DETERMINING THE SUITABILITY OF ANY VTE PRODUCT FOR ITS END USE.



LTR	REVISIONS	DATE	INT.
A	REVISED PART # 3646-001 TO PART # 3846-001	3-15-17	RAS
B	UPDATED PART NUMBER FROM 327D9N	4-27-17	RAS
C	UPDATED PART NUMBER FROM 3846-001	6-01-17	RAS
D	UPDATED DIMENSION FROM 1.314	7-27-17	RAS
E	UPDATED DIMENSION FROM .990	7-27-17	RAS
F	UPDATED DIMENSION FROM 2.054	7-27-17	RAS
G	UPDATED MATERIAL PART #	9-08-17	RAS
H	ADDED ELECTRICAL VALUES	6-21-19	RAS
I	UPDATED TORQUE VALUES	07-01-20	EJE
J	UPDATED BASE P/N FROM 327D5	8-23-21	RAS
K	UPDATED ELECTRICAL VALUES	10-18-22	RAS
L	327D5 WAS 327D9	6-03-24	RAS
M	REPLACED 3744-003 WITH 3744-007	8-2-24	RAS
N	REPLACED 327D5 WITH 327D9	8-12-24	RAS

3846-003 M8 X 1.25 HEAVY HEX JAM NUT STAINLESS STEEL, 2 PCS. < MAX TORQUE 102 IN./LBS. (11.5 Nm) >



INCLUDES P-16808110001 BLUE DDT MULTI LABEL, 1 PER CONTAINER

MATERIAL PART NO:  
MATERIAL:  
VENDOR PART NO:  
SPECIFIC GRAVITY:  
MELTING TEMP:  
UL RATING:

1111210514UL  
GLASS FILLED NYLON  
HYLON N2015 HL BK  
1.23  
515 F [268 C]  
UL 94 HB

CURRENT CARRYING CAPACITY:

(325 AMP @ 12VDC)

SCALE FACTOR : NONE  
ALL DIMENSIONS GIVEN AS: mm (in)  
TOLERANCES UNLESS OTHERWISE SPECIFIED :  
MOLDED PARTS: ±0.30° (±0.8mm)  
HARDWARE ITEMS: ±.010° (±0.25mm)

VTE Incorporated  
5437 Robinson Road, P.O. Box 790  
Pellston, Michigan 49769  
Telephone: 1-800-527-9256, 231-539-8000  
FAX: 231-539-0914

REF1	DATE: 8-27-21	DRN BY: RAS	WEIGHT:
		CHK'D BY: PJK	
TITLE: M8 PASSTHROUGH JUNCTION STUD			
MATERIAL: GLASS FILLED NYLON		PART NO. 77208N14	
COLOR: BLACK	DRG CLASS REV N		