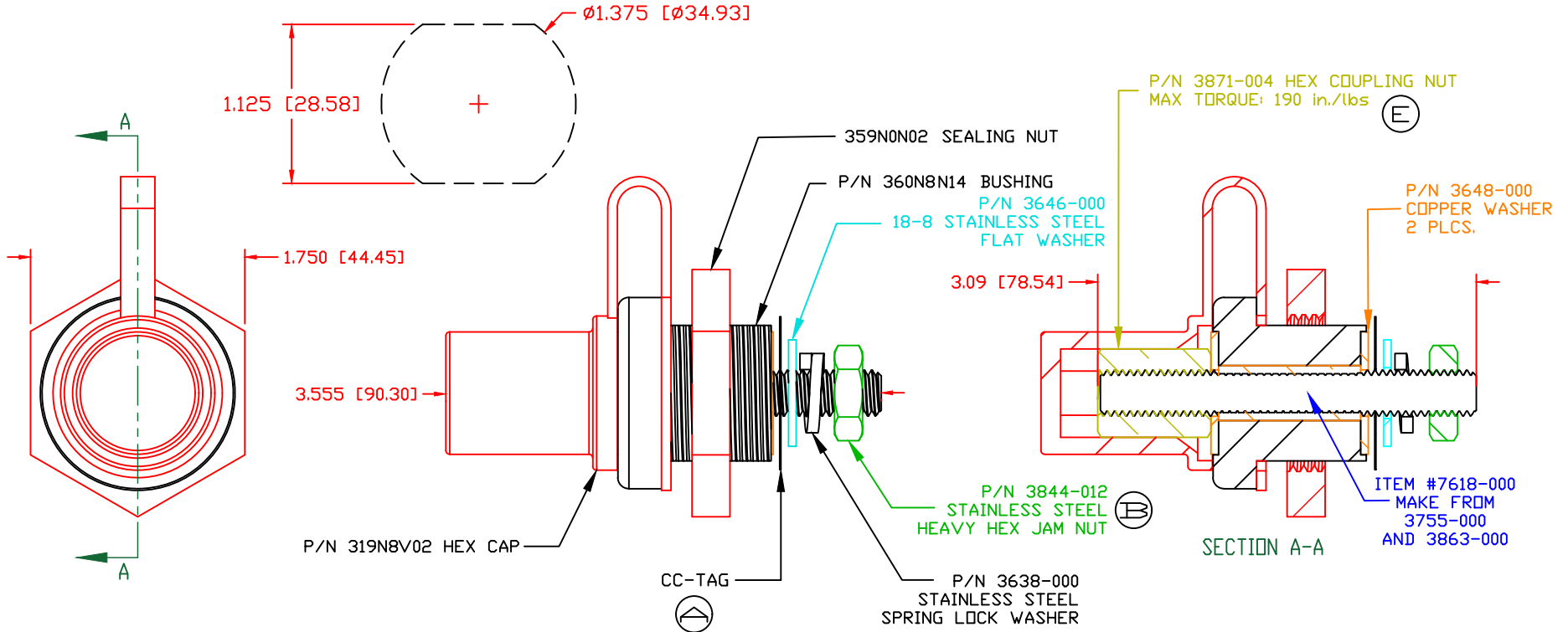


THE INFORMATION CONTAINED IN THIS DRAWING IS THE SOLE PROPERTY OF VTE INCORPORATED. ANY REPRODUCTION IN PART OR WHOLE WITHOUT THE WRITTEN PERMISSION OF VTE INCORPORATED IS PROHIBITED. VTE MAKES NO WARRANTY, EXPRESSED OR IMPLIED, AS TO THE SUITABILITY OF A PRODUCT FOR ANY INTENDED USE. THE CUSTOMER SHALL BEAR THE SOLE RESPONSIBILITY OF DETERMINING THE SUITABILITY OF ANY VTE PRODUCT FOR ITS END USE.

| LTR. | REVISIONS | DATE | INT. |
|------|--|----------|------|
| A | ADDED TORQUE TAG | 12-29-15 | RAS |
| B | 3844-012 WAS 3844-003 | 11-04-16 | JMM |
| C | UPDATED TORQUE VALUES FROM 180 IN-LBS [20.34 Nm] | 2-09-18 | RAS |
| D | REDRAWN AND UPDATED | 12-20-18 | RAS |
| E | HEX COUPLING NUT TORQUE VALUE ADDED | 09-03-20 | EJE |

USE GREENLEE PUNCH
ASSEMBLY #60098
FOR PANEL CUTOUT




MAXIMUM FASTENER TORQUES:
 (C) JAM NUTS: 212 IN-LBS [24.0 Nm]
 SEALING NUT: 120 IN-LBS [13.56 Nm]

MATERIAL PART NO: 7111210502
 MATERIAL: GLASS FILLED NYLON
 VENDOR PART NO: NYLON N2015 HL NAT
 SPECIFIC GRAVITY: 1.23
 MELTING TEMP: 515 F [268 C]
 U.L. RATING: UL 94 HB

CURRENT CARRYING CAPACITY: 350 AMPS @ 12VDC

SCALE FACTOR: NONE
 ALL DIMENSIONS GIVEN AS: in [mm]
 TOLERANCES UNLESS OTHERWISE SPECIFIED:
 MOLDED PARTS: ±.030" [±0.8mm]
 HARDWARE ITEMS: ±.010" [±0.25mm]

| | | | |
|---|--|---|----------------|
|  | | VTE Incorporated 5437 Robinson Road, P.O. Box 790 Pellston, Michigan 49769 Telephone: 1-800-527-9256, 231-539-8000 FAX: 231-539-0914 | |
| | | REF: CUSTOMER DIMS | DATE: 12-20-18 |
| | | CHK'D BY: PJK | |
| TITLE: 3/8"-16 POWER BUSHING JUMPER COPPER CORE 350 AMP | | | |
| MATERIAL: GLASS FILLED NYLON | | PART NO. | |
| COLOR: RED | | CCJB376N0N02 | |
| DRG CLASS | | REV E | |