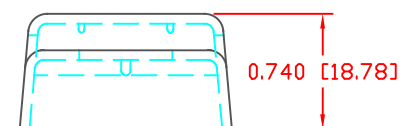
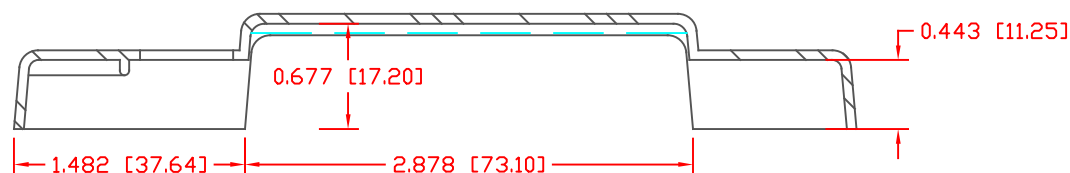
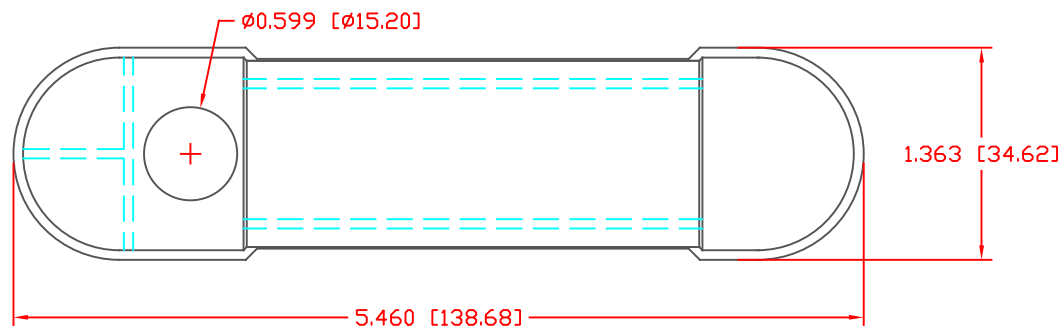


THE INFORMATION CONTAINED IN THIS DRAWING IS THE SOLE PROPERTY OF VTE INCORPORATED. ANY REPRODUCTION IN PART OR WHOLE WITHOUT THE WRITTEN PERMISSION OF VTE INCORPORATED IS PROHIBITED. VTE MAKES NO WARRANTY, EXPRESSED OR IMPLIED, AS TO THE SUITABILITY OF A PRODUCT FOR ANY INTENDED USE. THE CUSTOMER SHALL BEAR THE SOLE RESPONSIBILITY OF DETERMINING THE SUITABILITY OF ANY VTE PRODUCT FOR ITS END USE.


LTR.	REVISIONS	DATE	INT.
△	UPDATED MATERIAL INFORMATION FOR POLYPROPYLENE	8-15-22	RAS



SCALE FACTOR : NONE
ALL DIMENSIONS GIVEN AS: in [mm]
TOLERANCES UNLESS OTHERWISE SPECIFIED :
MOLDED PARTS: ±0.030" [±0.8mm]
ALL ANGLES ARE ± 1 DEGREE

MATERIAL PART NO:	1209650315
MATERIAL:	POLYPROPYLENE
VENDOR PART NO:	MAFILL CR HT 5641
ASH FILLER CONTENT	38%
TENSILE STRENGTH, YIELD:	33 MPa
DENSITY (G/CM ³):	1.25
NOTCHED IZOD IMPACT:	0.6 ft-lb/in
MFI (230DEG C /2.1kg):	13 g/10 min
FLAME CLASS UL:	HB

DO NOT SCALE

		VTE Incorporated		
		5437 Robinson Road, P.O. Box 790 Pellston, Michigan 49769 Telephone: 1-800-527-9256, 231-539-8000 FAX: 231-539-0914		
REF:	DATE:	DRN BY:	BRH	WEIGHT:
CUSTOMER DIMS	10-01-08	CHK'D BY:	BRH	.029 LBS [13.2 g]
TITLE: COVER, 12 POINT BUS				
MATERIAL: POLYPROPYLENE			PART NO.	
COLOR: YELLOW			312N9P05	
DRG CLASS REV A				