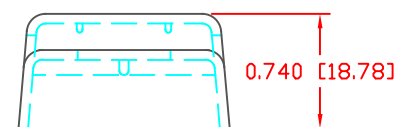
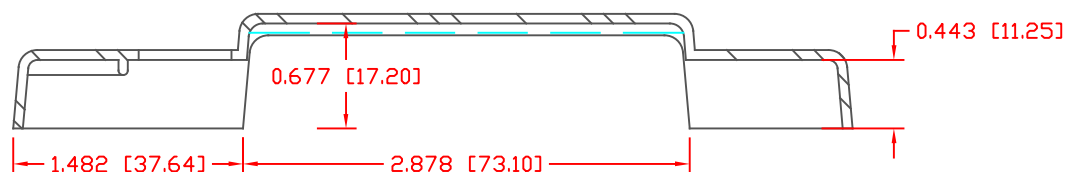
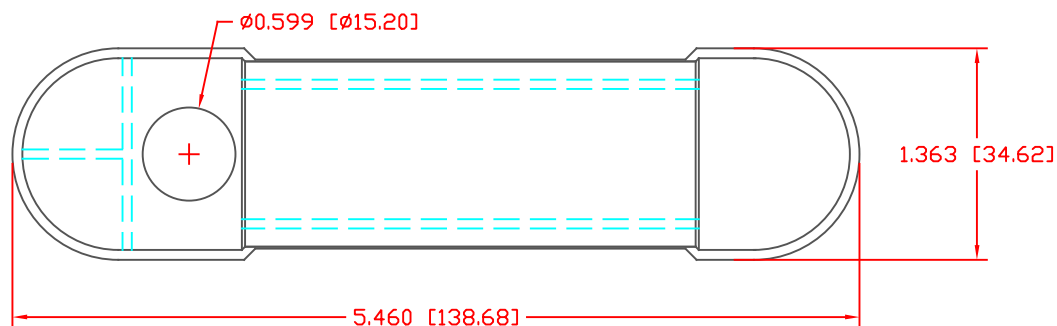


THE INFORMATION CONTAINED IN THIS DRAWING IS THE SOLE PROPERTY OF VTE INCORPORATED. ANY REPRODUCTION IN PART OR WHOLE WITHOUT THE WRITTEN PERMISSION OF VTE INCORPORATED IS PROHIBITED. VTE MAKES NO WARRANTY, EXPRESSED OR IMPLIED, AS TO THE SUITABILITY OF A PRODUCT FOR ANY INTENDED USE. THE CUSTOMER SHALL BEAR THE SOLE RESPONSIBILITY OF DETERMINING THE SUITABILITY OF ANY VTE PRODUCT FOR ITS END USE.


LTR.	REVISIONS	DATE	INT.
	UPDATED MATERIAL INFORMATION FOR POLYPROPYLENE	8-15-22	RAS



SCALE FACTOR : NONE  
ALL DIMENSIONS GIVEN AS: in [mm]  
TOLERANCES UNLESS OTHERWISE SPECIFIED :  
MOLDED PARTS:  $\pm 0.030"$  [ $\pm 0.8\text{mm}$ ]  
ALL ANGLES ARE  $\pm 1$  DEGREE

MATERIAL PART NO:	1209720314
MATERIAL:	POLYPROPYLENE
VENDOR PART NO:	MAFILL CR HT 6644 H
ASH FILLER CONTENT	40%
TENSILE STRENGTH, YIELD:	33 MPa
DENSITY (G/CM <sup>3</sup> ):	1.25
NOTCHED CHARPY IMPACT, 23C:	2.5 kJ/M <sup>2</sup>
MFI (230DEG C/2.1kg):	13 g/10 min
FLAME CLASS UL:	HB

DO NOT SCALE

		VTE Incorporated	
		5437 Robinson Road, P.O. Box 790 Pellston, Michigan 49769 Telephone: 1-800-527-9256, 231-539-8000 FAX: 231-539-0914	
REF:	DATE:	DRN BY:	WEIGHT:
CUSTOMER DIMS	10-01-08	BRH	.029 LBS [13.2 g]
TITLE:		CHK'D BY:	
COVER, 12 POINT BUS		BRH	
MATERIAL: POLYPROPYLENE		PART NO.	
COLOR: BLACK		312N9P14	
DRG CLASS REV A			