
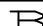
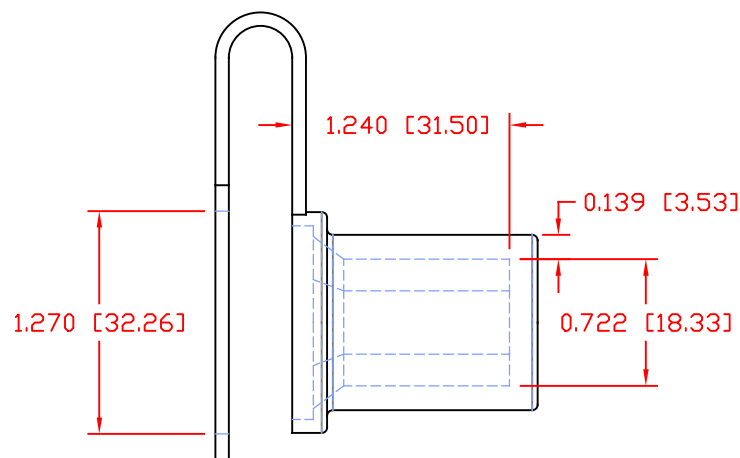
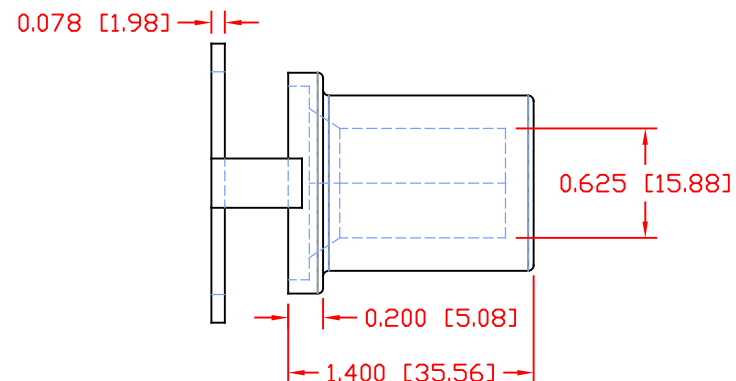
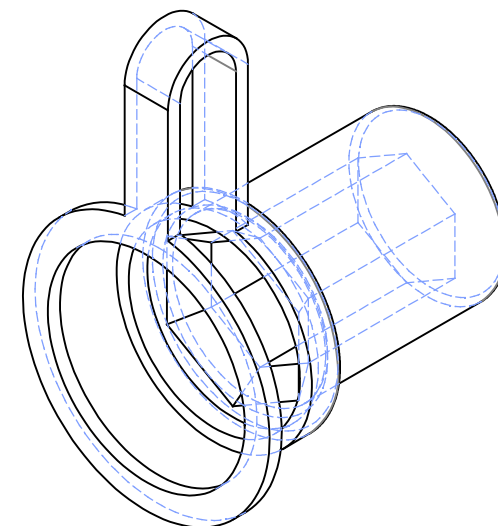
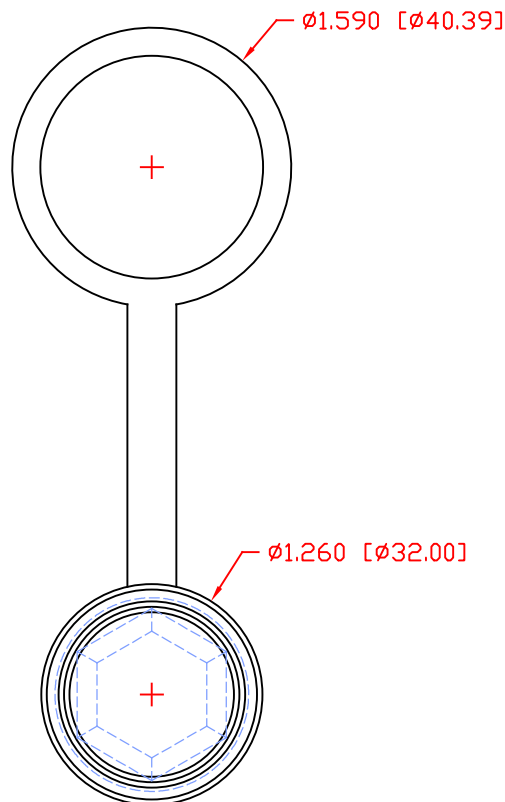


THE INFORMATION CONTAINED IN THIS DRAWING IS THE SOLE PROPERTY OF VTE INCORPORATED. ANY REPRODUCTION IN PART OR WHOLE WITHOUT THE WRITTEN PERMISSION OF VTE INCORPORATED IS PROHIBITED. VTE MAKES NO WARRANTY, EXPRESSED OR IMPLIED, AS TO THE SUITABILITY OF A PRODUCT FOR ANY INTENDED USE. THE CUSTOMER SHALL BEAR THE SOLE RESPONSIBILITY OF DETERMINING THE SUITABILITY OF ANY VTE PRODUCT FOR ITS END USE.

LTR.	REVISIONS	DATE	INT.
	REVISED PART WEIGHT FROM .028 lbs [13.03]	3-05-19	RAS
	REDRAWN AND UPDATED ( ORIGINAL DRAWING 6-20-08 )	6-12-19	RAS




( INSTALLED VIEW )



SCALE FACTOR : NONE  
ALL DIMENSIONS GIVEN AS: in [mm]  
TOLERANCES UNLESS OTHERWISE SPECIFIED :  
MOLDED PARTS:  $\pm 0.030$ " [ $\pm 0.8$ mm]  
ALL ANGLES ARE  $\pm 1$  DEGREE

VTE PART NO: 1101650114  
MATERIAL: PVC  
VENDOR PART NO: 9812-65-BLACK  
SHORE DUROMETER: "A" 10 SEC. 65  
SPECIFIC GRAVITY: 1.34  
ULT. ELONGATION %: 400  
MELTING TEMP: 315-335 F [157-168 C]  
BRITTLE TEMP: -54 F [-48 C]  
TENSILE STRENGTH PSI: 1550 PSI  
DIELECTRIC STRENGTH, V./mil: 453  
U.L. RATING: V2

DO NOT SCALE

		VTE Incorporated	
		5437 Robinson Road, P.O. Box 790 Pellston, Michigan 49769 Telephone: 1-800-527-9256, 231-539-8000 FAX: 231-539-0914	
REF:	DATE:	DRN BY: RAS	WEIGHT:
CUSTOMER DIMS	03-04-16	CHK'D BY: RAS	.034 LBS [15.68 g]
TITLE: JUMPER BUSHING INSULATOR			
MATERIAL: PVC		PART NO.	
COLOR: BLACK		319N8V14	
DRG CLASS REV B			