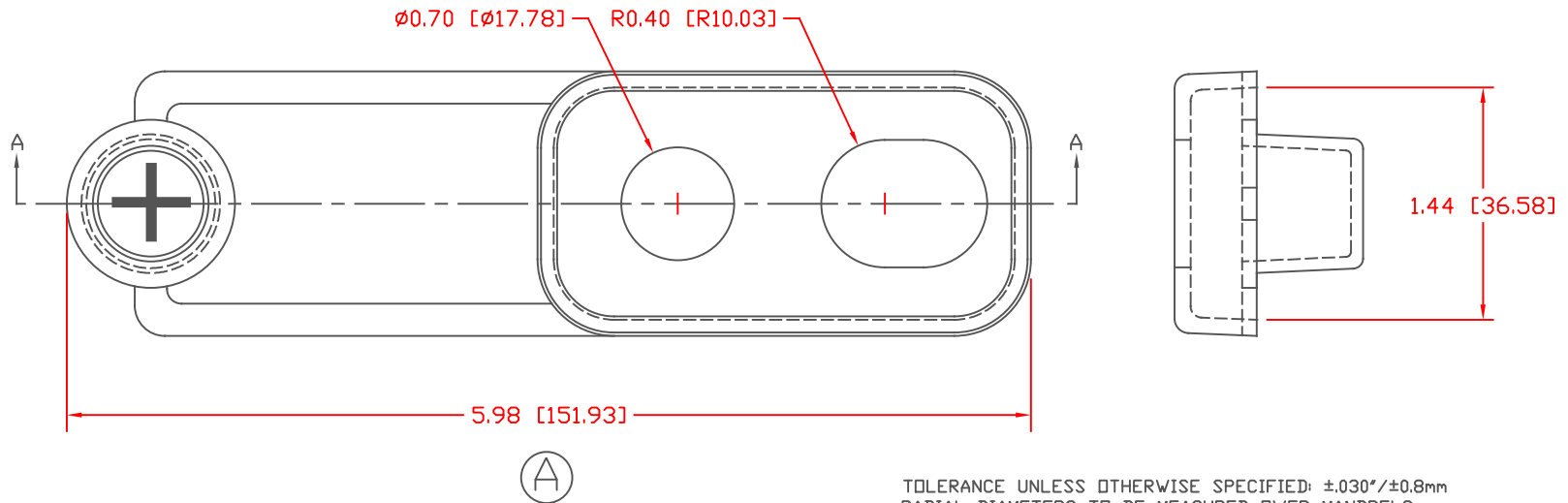
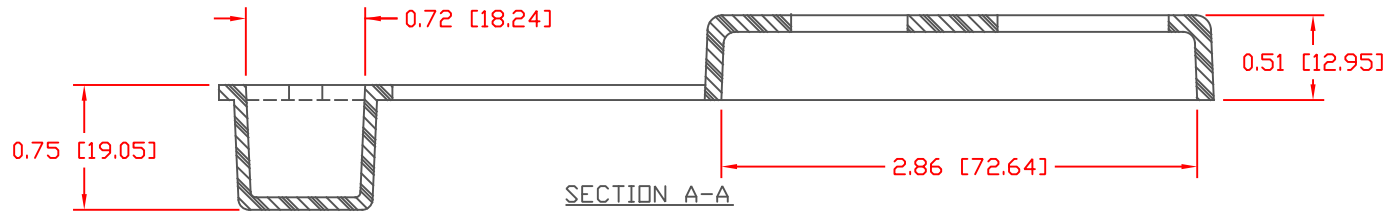


PROPRIETARY RIGHTS ARE CLAIMED FOR THE MATERIAL DISCLOSED IN THIS DRAWING.

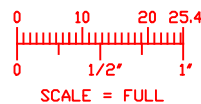
TYP. WALL THICKNESS = .10 [2.54]


LTR.	REVISIONS	DATE
△	1532 WAS 1387, REVISED TO AGREE WITH PARTS AS MANUFACTURED	19JUN06



TOLERANCE UNLESS OTHERWISE SPECIFIED: $\pm 0.30^*/\pm 0.8\text{mm}$
 RADIAL DIAMETERS TO BE MEASURED OVER MANDRELS,
 RING GAGES OR PIN GAGES OF SUITABLE SIZE

VTE Material Part No:	1101650102
Material:	RED PVC
Material Part No	9812-65-RED683
Max. Operating Temp:	105 C
Shore Durometer	"A" 10 SEC. 67/62
Specific Gravity:	1.34
Ult. Elongation %:	475
Brittle Temp:	-44 C
Tensile Strength PSI:	1547 PSI
U.L. Rating:	94 V2
MEETS:	FMVSS.302



		VTE Incorporated 5437 Robinson Road, P.O. Box 790 Pellston, Michigan 49769 Telephone: 1-800-527-9256, 231-539-8000 FAX: 231-539-0914	
		REF:	DATE: 3-31-98
TITLE: DUAL POST MARINE BATTERY TERMINAL BOOT		CHK'D BY:	
MATERIAL:		PART NO. 458NOV02	
COLOR:	DRG CLASS REV A		