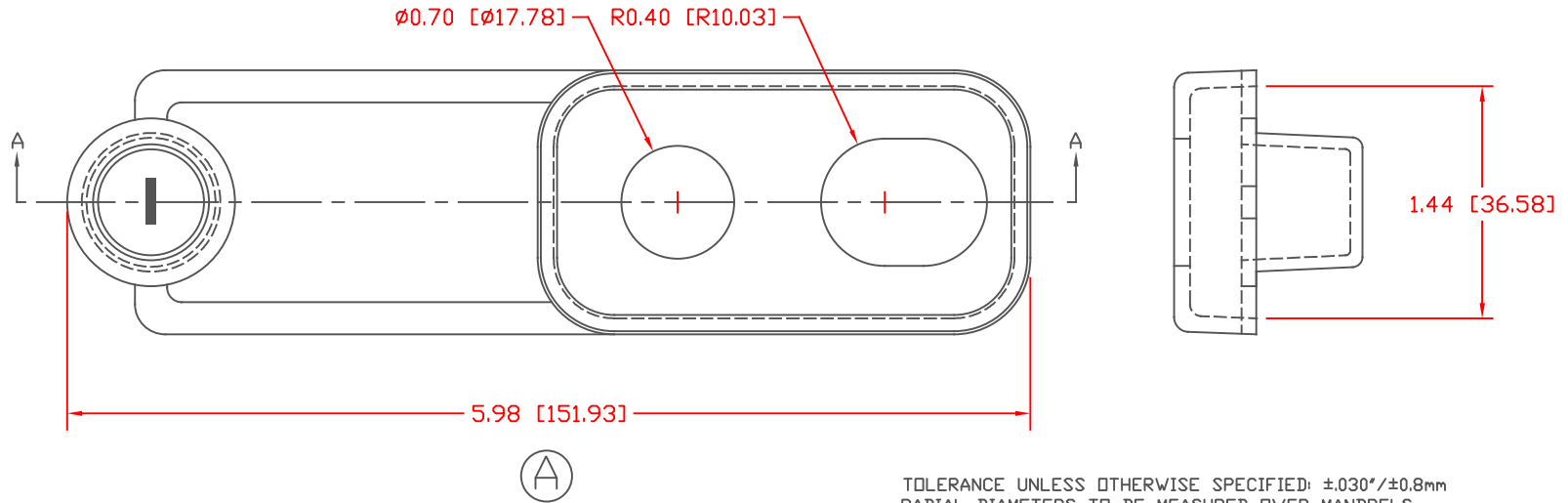
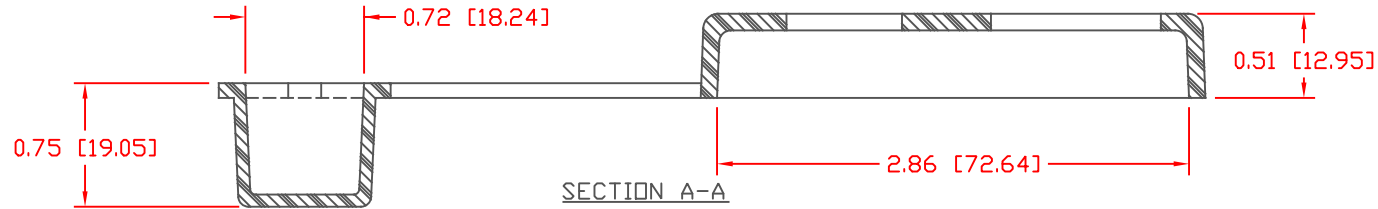


PROPRIETARY RIGHTS ARE CLAIMED FOR THE MATERIAL DISCLOSED IN THIS DRAWING.

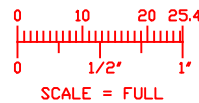
TYP. WALL THICKNESS = .10 [2.54]


| LTR. | REVISIONS   | DATE    |
|------|---|---------|
| △    | 1532 WAS 138.7, REVISED TO AGREE WITH PARTS AS MANUFACTURED | 19JUN06 |



TOLERANCE UNLESS OTHERWISE SPECIFIED: ±0.30"/±0.8mm  
 RADIAL DIAMETERS TO BE MEASURED OVER MANDRELS,  
 RING GAGES OR PIN GAGES OF SUITABLE SIZE

|                       |                   |
|-----------------------|-------------------|
| VTE Material Part No: | 1101650114        |
| Material:             | BLACK PVC         |
| Material Part No:     | 9812-65           |
| Max. Operating Temp:  | 105 C             |
| Shore Durometer:      | "A" 10 SEC. 67/63 |
| Specific Gravity:     | 1.33              |
| Ult. Elongation %:    | 520               |
| Brittle Temp:         | -36 C             |
| Tensile Strength PSI: | 1563 PSI          |
| U.L. Rating:          | 94 V2             |
| MEETS:                | FMVSS.302         |



|   |                 |  |               |
|---|-----------------|--|---------------|
|  |                 | VTE Incorporated<br>5437 Robinson Road, P.O. Box 790<br>Pellston, Michigan 49769<br>Telephone: 1-800-527-9256, 231-539-8000<br>FAX: 231-539-0914 |               |
|   |                 | REF:   | DATE: 3-31-98 |
| TITLE: DUAL POST MARINE BATTERY TERMINAL BOOT   |                 | CHK'D BY:  |               |
| MATERIAL:   |                 | PART NO. 458NOV14  |               |
| COLOR:  | DRG CLASS REV A |  |               |