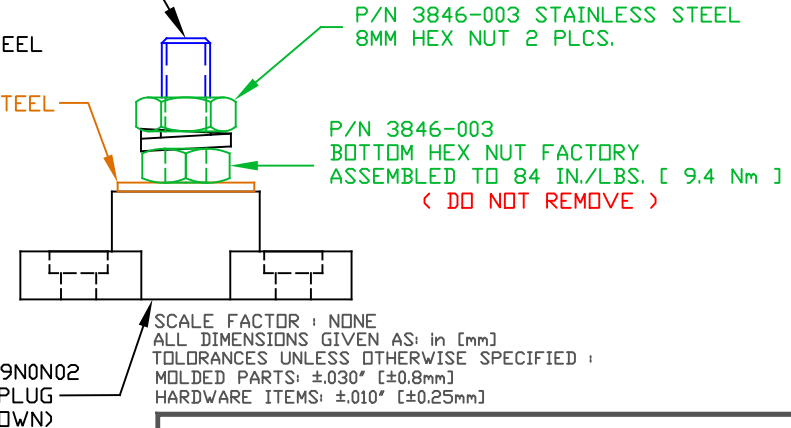
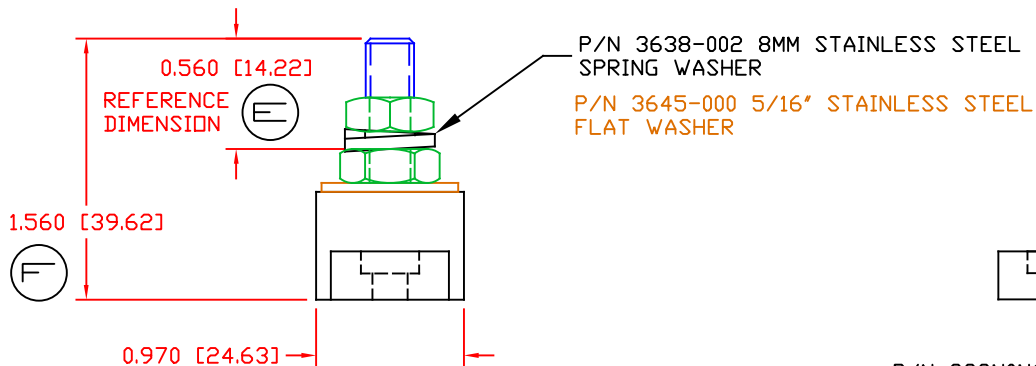
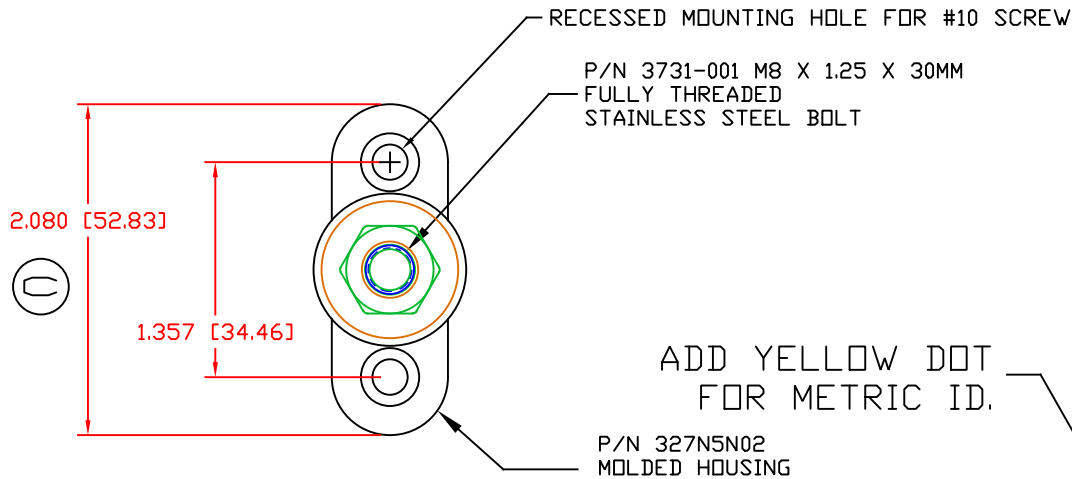



THE INFORMATION CONTAINED IN THIS DRAWING IS THE SOLE PROPERTY OF VTE INCORPORATED. ANY REPRODUCTION IN PART OR WHOLE WITHOUT THE WRITTEN PERMISSION OF VTE INCORPORATED IS PROHIBITED. VTE MAKES NO WARRANTY, EXPRESSED OR IMPLIED, AS TO THE SUITABILITY OF A PRODUCT FOR ANY INTENDED USE. THE CUSTOMER SHALL BEAR THE SOLE RESPONSIBILITY OF DETERMINING THE SUITABILITY OF ANY VTE PRODUCT FOR ITS END USE.

LTR.	REVISIONS	DATE	INT.
A	ADDED CURRENT RATING	9-19-18	RAS
B	REPLACED CURRENT LIMITS WITH TEMPERATURE LIMIT	10-12-18	RAS
C	UPDATED MOUNTING DIMENSIONS	11-09-21	RAS
D	UPDATED OVERALL HEIGHT DIMENSION FROM 1.547 [24.63]	1-4-23	RAS
E	0.560 [14.22] WAS 0.953 [24.20]	2-17-23	RAS
F	1.560 [39.62] WAS 1.940 [49.27]	2-17-23	RAS



MATERIAL PART NO: 7111210502
MATERIAL: GLASS FILLED NYLON
VENDOR PART NO: NYLON N2015 HL NAT
SPECIFIC GRAVITY: 1.23
MELTING TEMP: 515 F [268 C]
U.L. RATING: UL 94 HB
MAXIMUM RECOMMENDED TORQUE: 96 IN./LBS. (10.8 Nm)

(B) OVERALL ASSEMBLY TEMPERATURE NOT TO EXCEED 140 DEGREES F (60 DEGREES C)

		VTE Incorporated 5437 Robinson Road, P.O. Box 790 Pellston, Michigan 49769 Telephone: 1-800-527-9256, 231-539-8000 FAX: 231-539-0914	
REF: CUSTOMER DIMS	DATE: 7-17-17	DRN BY: RAS CHK'D BY: PJK	WEIGHT:
TITLE: 8MM SMALL JUNCTION STUD			
MATERIAL: GLASS FILLED NYLON		PART NO. 77008N02	
COLOR: RED	DRG CLASS: REV F		