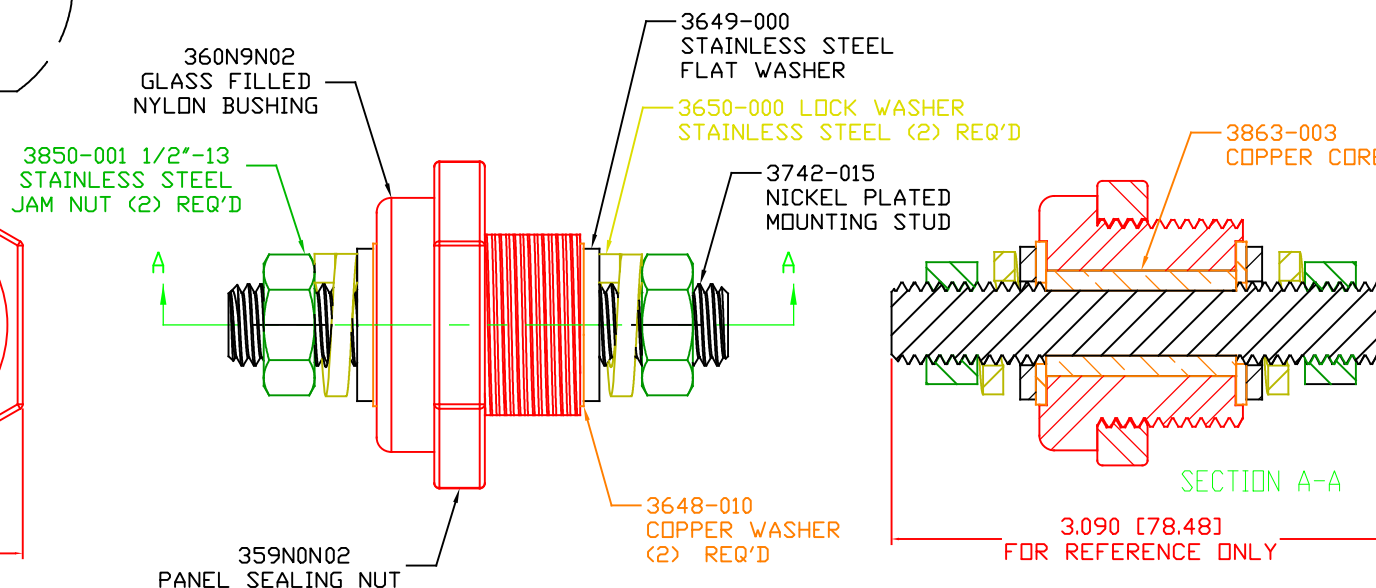
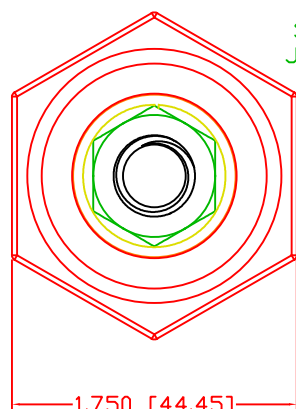
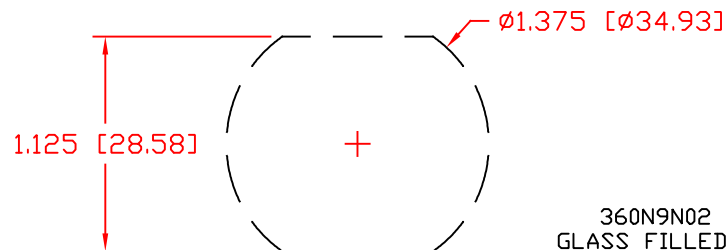


THE INFORMATION CONTAINED IN THIS DRAWING IS THE SOLE PROPERTY OF VTE INCORPORATED. ANY REPRODUCTION IN PART OR WHOLE WITHOUT THE WRITTEN PERMISSION OF VTE INCORPORATED IS PROHIBITED. VTE MAKES NO WARRANTY, EXPRESSED OR IMPLIED, AS TO THE SUITABILITY OF A PRODUCT FOR ANY INTENDED USE. THE CUSTOMER SHALL BEAR THE SOLE RESPONSIBILITY OF DETERMINING THE SUITABILITY OF ANY VTE PRODUCT FOR ITS END USE.

LTR.	REVISIONS	DATE	INT.

USE GREENLEE PUNCH
ASSEMBLY #60098
FOR PANEL CUTOUT



SCALE FACTOR : NONE
ALL DIMENSIONS GIVEN AS: in [mm]
TOLERANCES UNLESS OTHERWISE SPECIFIED :
MOLDED PARTS: $\pm 0.030''$ [$\pm 0.8\text{mm}$]
HARDWARE ITEMS: $\pm 0.010''$ [$\pm 0.25\text{mm}$]

MAXIMUM FASTENER TORQUES:

JAM NUTS: 198 IN-LBS [22.30 Nm]

SEALING NUT: 120 IN-LBS [13.56 Nm]

CURRENT CARRYING CAPACITY:

DUTY CYCLE:

80%

CURRENT CAPACITY:

5.2 Kw (440 AMP @ 12VDC)

TEMPORARY MAX (12 MINUTES)

6.6 Kw (550 AMP @ 12VDC)

MATERIAL PART NO:

7111210502

MATERIAL:

GLASS FILLED NYLON

VENDOR PART NO:

DURETHAN BKV 15 H 3.0 000000

SPECIFIC GRAVITY:


1.23

MELTING TEMP:

415 F [213 C]

U.L. RATING:

UL 94 HB

		VTE Incorporated	
		5437 Robinson Road, P.O. Box 790 Pellston, Michigan 49769 Telephone: 1-800-527-9256, 231-539-8000 FAX: 231-539-0914	
REF:	DATE:	DRN BY:	WEIGHT:
CUSTOMER DIMS	11-03-17	RAS	
		CHK'D BY:	PJK
TITLE: 1/2" POWER BUSHING, COPPER CORE			
MATERIAL: GLASS FILLED NYLON		PART NO.	
COLOR: RED		CCB506N02	
DRG CLASS			